



Santa Susana Mountain Park Association

NEWS and VIEWS

\$10 MILLION VOTED FOR PARKLAND IN THE SANTA SUSANAS, SIMI HILLS

The 18-year effort to create a park in the Santa Susana Mountains and Simi Hills won its most significant victory to date with the overwhelming voter approval of Prop. 70 in the June primary election. The \$776 million parkland, wildlife and coastal initiative bond act received 65% of the votes statewide (3,431,105 in favor). In overdeveloped and park-poor Los Angeles County, the margin of victory was even more impressive with 71% (967,501) voting "yes." Prop. 70 received more votes than any of the other bond acts on the ballot except the veteran measure.

Prop. 70 will provide \$10 million for land acquisition in the Santa Susana Mountains and Simi Hills to expand the existing 428-acre project acquired by California during the past decade. The Santa Susana Mountain Park Association (SSMPA) and the Foundation for the Preservation of the Santa Susana Mountains jointly sought and won inclusion of this funding in the measure. In addition, many members collected hundreds of signatures to place the initiative on the ballot. The Santa Susana volunteer effort is credited with having obtained well over 30,000 of the 725,000 statewide signatures. Many other individuals and organizations assisted with the signature gathering as well as the campaign to pass Prop. 70. SSMPA is thankful for the efforts of everyone during the past two years--we couldn't have done it without you!

190-ACRE HOPETOWN PURCHASED, RENAMED CORRIGANVILLE PARK

Simi Valley is now linked by parkland to Chatsworth with the acquisition and dedication of 190 prime acres on the Ventura County side of the Santa Susana Pass. This property, in addition to its strategic location, has significant historical, cultural, scenic and environmental attributes. Consequently, SSMPA's parkland and open space efforts have become a regional reality! With prudent expenditure of the \$10 million Prop. 70 monies earmarked for our area, we are hopeful our project will receive the statewide recognition it deserves.

The Corriganville property has had a long and varied history. Native Americans inhabited it and Spanish padres traversed it en route to the missions. During the 1860's, the stagecoaches that linked Los Angeles with Ventura, Santa Barbara and San Francisco were pulled across it. And in 1904, the Southern Pacific railroad built its tunnel under a portion of it.

But it was actor-cowboy-stuntman Ray "Crash" Corrigan who was responsible for millions of people visiting the area via the movies and television. He bought the land in 1937 and during the next two decades over 3,000 movies and many television western series were filmed on this dramatic acreage. Corrigan began the development of a western amusement park in 1949 which attracted 10-20,000 weekend visitors during its heyday. Rated among the top ten amusement parks in the nation at the time, it featured stuntmen shows, visits to the movie lots, a working western town, Indian craft displays, pony rides, stagecoach rides and boating on a lake. Corriganville was purchased (See P. 2)

CORRIGANVILLE PARK (Cont'd from P. 1)

by Bob Hope in 1965 as part of a 1,400 land acquisition that included Rocky Peak to the north of the Simi Freeway. The massive Newhall to Malibu fire in 1970 destroyed the movie sets and buildings. In 1983 Griffin Homes obtained a purchase option with the intention to develop all lowland areas of the property for residential and commercial uses. Subsequently an agreement was reached between the Rancho Simi Recreation and Park District and the City of Simi Valley to purchase this 190-acre portion of Griffin's land and to allow the development of the remainder. The district and city formed in 1987 a joint powers authority known as the Rancho Simi Open Space Agency (RSOSCA) which, with a generous grant from the Santa Monica Mountains Conservancy, purchased Corriganville and dedicated it as public open space in May of this year. Shortly thereafter, work was begun on a master plan to guide future uses, restoration and development in the park. A Corriganville Advisory Committee, which included a representative of SSMPA, was established. On December 14 a public hearing was held on the draft master plan. Over 100 people attended, including SSMPA members JANICE HINKSTON and AL ROSEN and many members of the Corriganville Preservation Committee. The plan was unanimously adopted in concept. It includes the restoration of Corriganville as a themed western town, including a museum, picnic area and outdoor amphitheater. A stagecoach ride operation and trails for hiking and equestrian use are proposed. The importance of the wildlife corridor and the preservation of endangered plant species are recognized to be of primary importance and the plan requires that any use or facility be compatible with the park's environment. An economic analysis will be conducted to determine the cost of maintenance and operation and additional parking alternatives will be studied. The Santa Monica Mountains Conservancy is scheduled to discuss the plan at its January 18 meeting in Simi Valley.

SSMPA commends the public agencies mentioned above as well as the Corriganville Preservation Committee for their fine efforts to date. We look forward to working with them during the years ahead as we make the Corriganville Park plan a reality.

TRAIL TIDBITS...

...Sunset Magazine, in its November 1988 issue, featured a two page article on SSMPA and its every Sunday hikes open to the public.

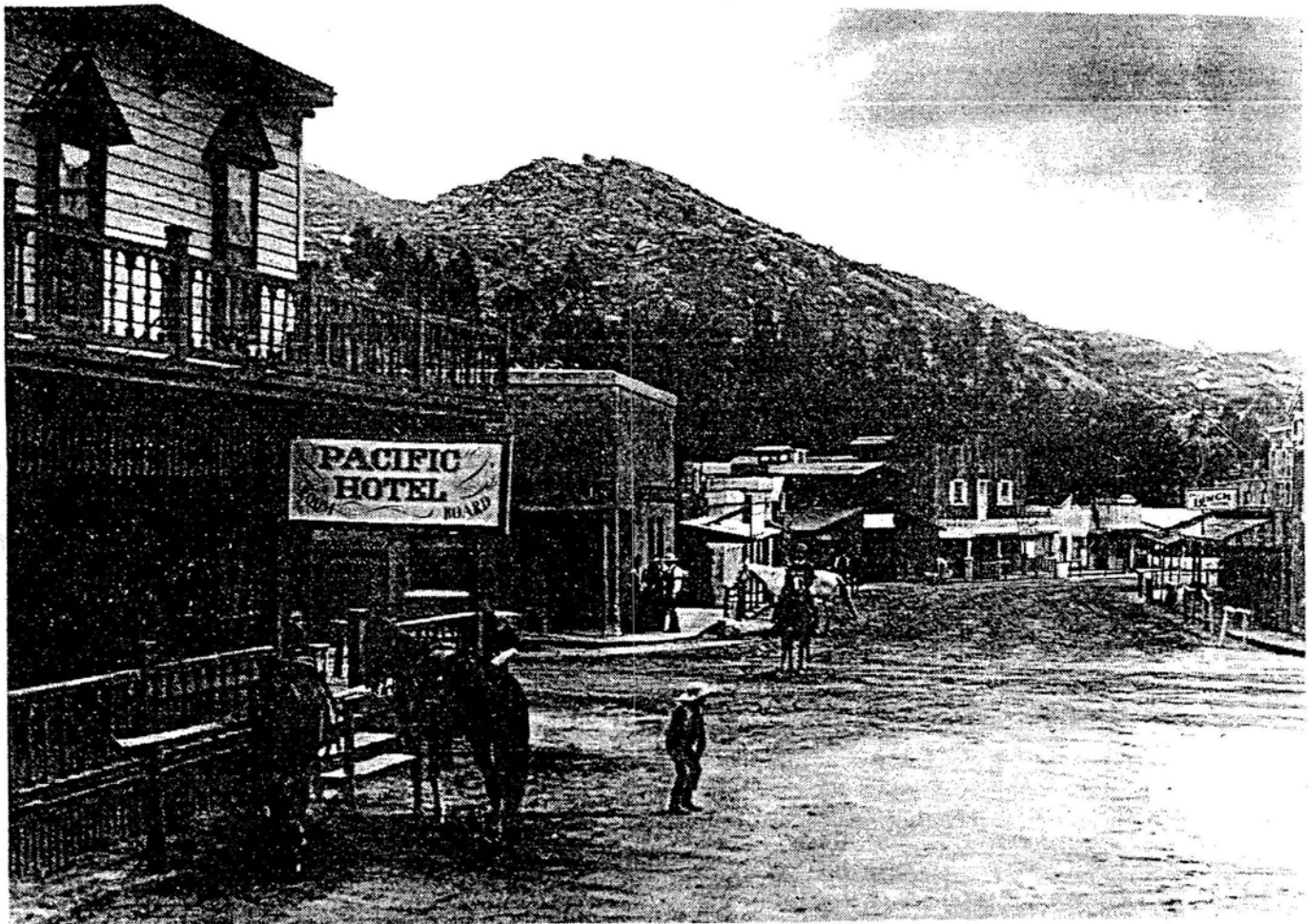
...She didn't realize it, but five-year-old Annie Ryan, daughter of member BARBARA RYAN, was the favorite of many of the 1,500 spectators viewing SSMPA's entry in the eighth annual Chatsworth Holiday Parade on December 11. How could anyone have missed the little cowgirl, complete with boots and a red hat, skipping and waving down the center of Devonshire Street? Also joining Annie were SSMPA Founder JANICE HINKSTON, President JOHN OTTER, Foundation President GLENN BAILEY, NANCY RAZANSKI, BARBARA RYAN and SANDY JOHNSON. Vice-President DAN COOPER set up an information table at the parade terminus in Mason Park. SSMPA had a shared entry with the Corriganville Preservation Committee, who sponsored an impressive entry that included a stagecoach pulled by a team of six horses, a flatbed truck and dozens of equestrians. It's not too early to be thinking about next year's entry, so if you would like to participate please call Pauline, 818/341-5872.

...When these two SSMPA leaders take a hike, you can be certain JAN HINKSTON and JOHN OTTER will be traversing interesting ground. So it came as no surprise when they spent part of July and August in China as part of an international ecology and environmental preservation study tour. They visited Beijing, Xian, Nanjing, Wuxi and Shanghai as well as the panda reserve in central China. John was part of a similar tour last year of the Soviet Union that included a visit to Siberia. Both tours were sponsored by Canoga Park-based Source Media, 818/992-4526.

...Looking for gift ideas? How about the Foundation's beautiful note cards featuring a color photograph of Chumash Indian pictographs. They are only five dollars for a package of eight cards and envelopes. They are available at our Visitor Center on Sunday afternoons or call Pauline, 818/341-5872.

...A stagecoach schedule dated 1919 was donated to SSMPA by member JOHN BURTON, an amateur archaeologist and history buff. Thank you, John.

MAIN STREET, CORRIGANVILLE, USA, DURING THE FILMING ERA



PROPOSITION 70: IT'S THE LAW

Proposition 70, the California Wildlife, Coastal, and Park Land Conservation Act of 1988, is now law and many SSMPA members have asked about its wording as it relates to our project. Prop. 70 added to the State Public Resources Code the following: "Section 5907. (b)(1)(E) Ten million dollars (\$10,000,000) for acquisition of land for additions to the Santa Susana Mountain Project to preserve historic and scenic sites, for hiking and equestrian trails, or for wildlife habitat and migration routes; provided that all acquisitions shall be located within the Rim of the Valley Corridor as defined in Section 33105.5 within the Simi Hills or Santa Susana Mountains in Los Angeles and Ventura Counties."

"Section 5923. If some or all the funds allocated pursuant to subparagraph (E) of paragraph (1) of subdivision (b) of Section 5907 are not expended by the Department of Parks and Recreation by July 1, 1993, the remaining funds shall be allocated to the Santa Monica Mountains Conservancy for the purposes of that subparagraph. The Legislature may at any time

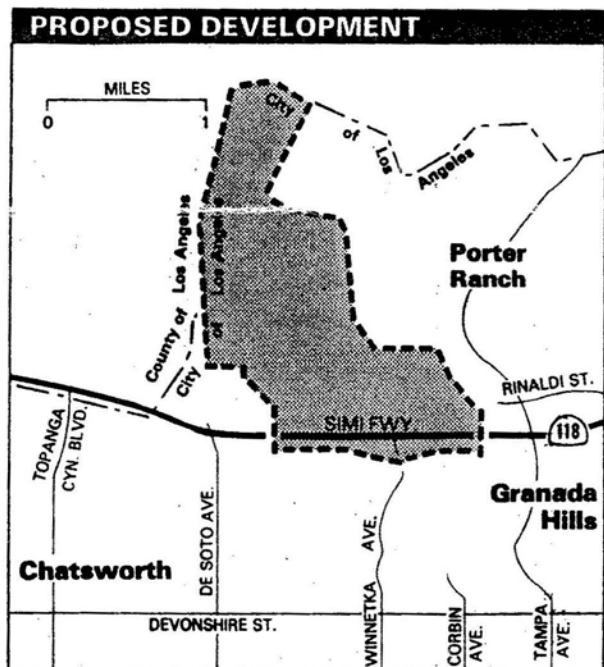
allocate all or a portion of these funds to the Santa Monica Mountains Conservancy for the purposes for which the funds were originally allocated."

Section 5905 also provides that "It is the intent of the People of California in enacting this division that it be carried out in the most expeditious manner possible, and that all state officials implement this division to the fullest extent of their authority."

Earlier this year the Legislature approved the State budget which allocated the \$10 million to the Santa Monica Mountains Conservancy this fiscal year. However, the Governor line-item vetoed this allocation, thus maintaining the State Department of Parks and Recreation as the agency responsible for making the acquisitions. SSMPA has already provided the Department with a substantial amount of background information and will be involved throughout the acquisition process. We will keep our members apprised of our progress. If you are able to assist us, please call Glenn at 818/345-1222.

\$2 BILLION DEVELOPMENT PLANNED IN HILLS ABOVE CHATSWORTH

Plans for a massive development in the Santa Susana Mountains between De Soto and Corbin avenues from just south of the Simi Freeway north to the city limits were unveiled at a public workshop on December 7. The Porter Ranch Development Co. is proposing to construct a 1.5 million square foot regional shopping mall, hotel, office buildings (up to 15 stories in height), 800 apartment units and 2,200 houses on approximately 1,300 acres. The development would generate 164,840 daily vehicle trips in the area. A number of SSMPA board members attended the session, the first in a series of hearings to be held prior to the adoption of the final plan. An environmental impact report (EIR) is scheduled to be released in January and a public hearing will follow in March. SSMPA is concerned with the impact that this development will have on the environment. If you are interested in serving on a committee to monitor this project, please call Glenn at 818/345-1222.



FOUNDATION FOR THE PRESERVATION OF THE
SANTA SUSANA MOUNTAINS
POST OFFICE BOX 4831
CHATSWORTH, CALIFORNIA 91313

DATED MATERIAL

ADDRESS CORRECTION REQUESTED

CHATSWORTH RESERVOIR TOUR SLATED

The annual tour of Chatsworth Reservoir is scheduled to be held Saturday, January 7 at 8:30 a.m. beginning at the Plummer Street entrance. The all-morning tour features visits to the oak tree forest, historic kiln site and scenic vistas. Audubon naturalists help participants identify water fowl in the ecology pond area. Sturdy walking shoes, water and a snack are recommended. Rain date is January 14. For more information, call 818/703-8056.

DOCENTS, DOCENTS, DOCENTS-COME OUT, COME OUT WHEREVER YOU ARE

Every Sunday afternoon SSMPA welcomes the public to its Visitor Center in Chatsworth Park South. We need a few more volunteers to expand our docent group. Are you able to spend a few hours each month greeting hikers and park visitors, turning on the slide projector and selling T-shirts, notecards and plant and history books? If you like to meet and talk to people, you will enjoy being a docent. You can invite a friend to spend the afternoon with you or bring a book to read between visitors. Docents open up the room at 11:30 a.m. and closing is scheduled for 3:00 p.m. every Sunday (except Christmas). Please volunteer by calling Jan at 818/884-9610.

SSMPA GENERAL MEETINGS are held the third Monday of every month at 7:30 p.m. at Glendale Federal community room, 21821 Devonshire Street in Chatsworth. Members are always welcome to attend and participate. Program meetings are held quarterly; we endeavor to invite members by mail or phone. On January 16, we will discuss the State's Prop. 70 recommendations. Our annual meeting, featuring officer elections, will be held on March 20. Mark your calendar now!

NONPROFIT ORG.
U.S. POSTAGE
PAID
VAN NUYS, CA
PERMIT NO. 761

LIFE

Nancy Razanski
22149 James Alan Circle
Chatsworth CA 91311